

EXHIBITS



**BAYFIELD MASTER
STORMWATER SERVICING STUDY
EXISTING STORM SEWER PLAN
COMMUNITY OF BAYFIELD
NORTH WEST PORTION**

DATE
DEC 11, 2013

PROJECT No.
13129

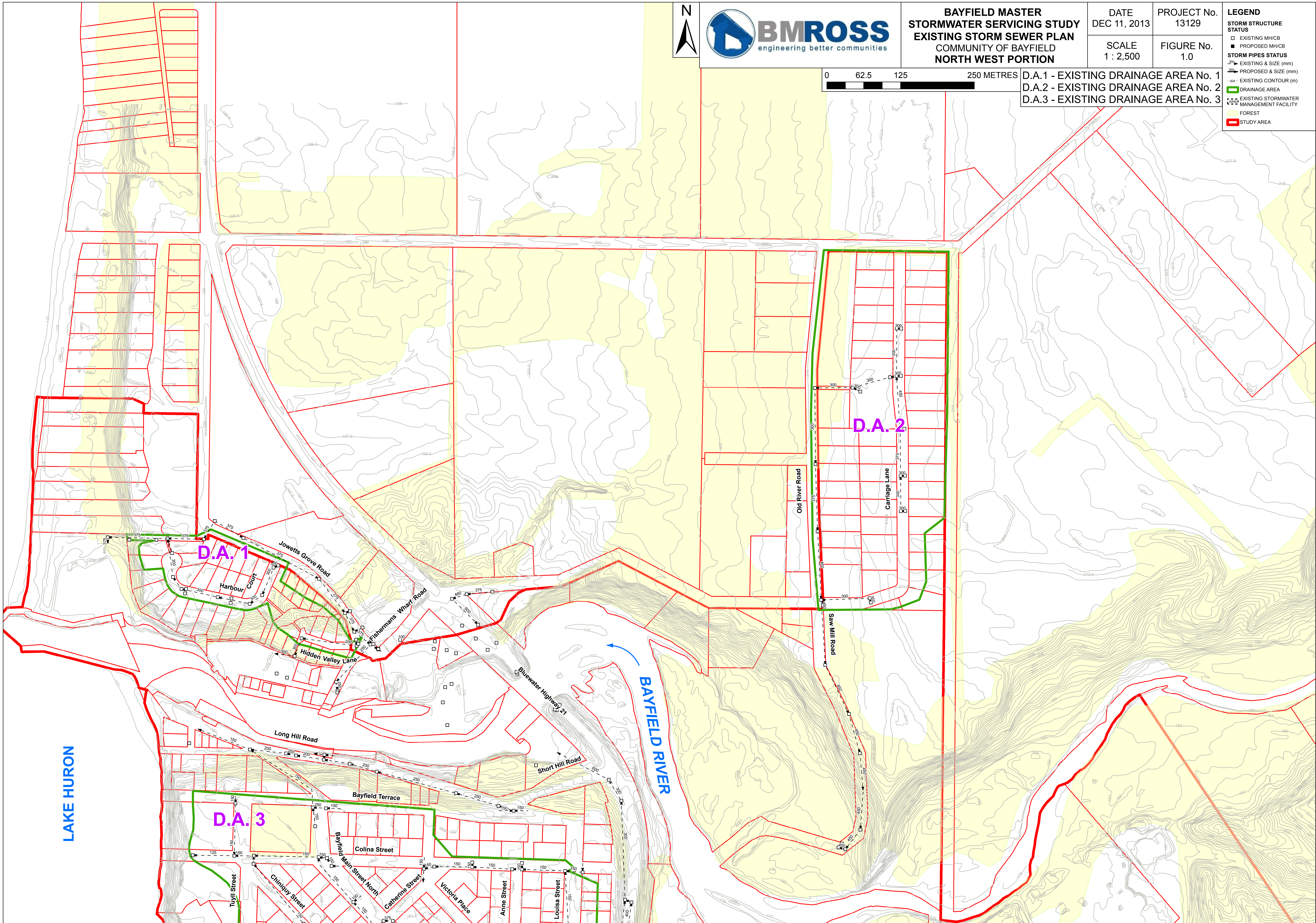
SCALE
1 : 2,500

FIGURE No.
1.0



D.A.1 - EXISTING DRAINAGE AREA No. 1
D.A.2 - EXISTING DRAINAGE AREA No. 2
D.A.3 - EXISTING DRAINAGE AREA No. 3

| LEGEND | |
|-------------------------------|---|
| STORM STRUCTURE STATUS | |
| | EXISTING MH/CB |
| | PROPOSED MH/CB |
| STORM PIPES STATUS | |
| | EXISTING & SIZE (mm) |
| | PROPOSED & SIZE (mm) |
| | EXISTING CONTOUR (m) |
| | DRAINAGE AREA |
| | EXISTING STORMWATER MANAGEMENT FACILITY |
| | FOREST |
| | STUDY AREA |





**BAYFIELD MASTER
STORMWATER SERVICING STUDY
EXISTING STORM SEWER PLAN
COMMUNITY OF BAYFIELD
CENTRE PORTION**

DATE
DEC 11, 2013

PROJECT No.
13129

SCALE
1 : 2,500

FIGURE No.
2.0

LEGEND

STORM STRUCTURE STATUS

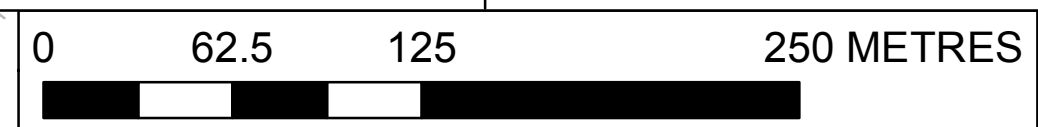
- EXISTING MH/CB
- PROPOSED MH/CB

STORM PIPES STATUS

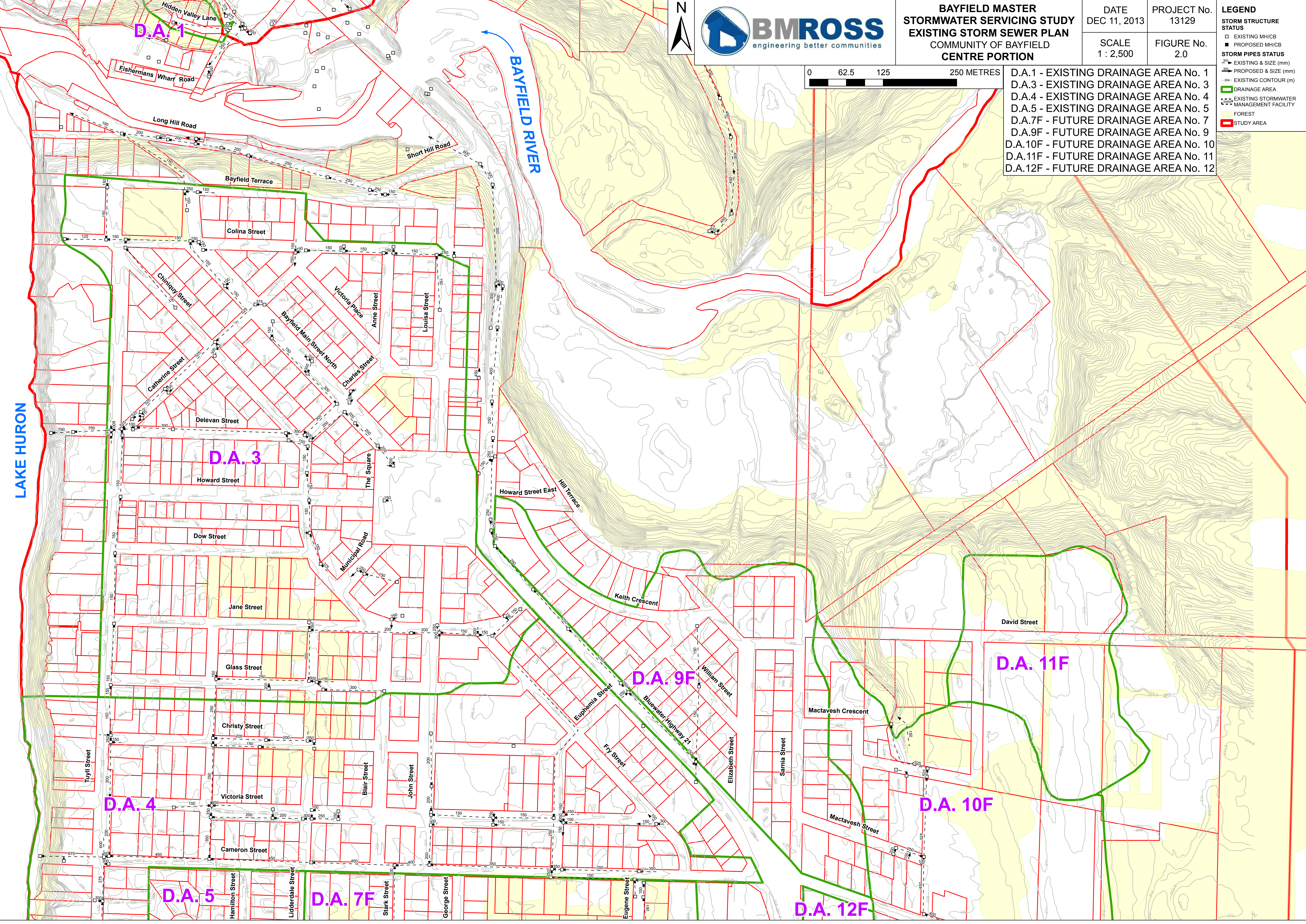
- 300 - EXISTING & SIZE (mm)
- 300 - PROPOSED & SIZE (mm)
- 204 - EXISTING CONTOUR (m)

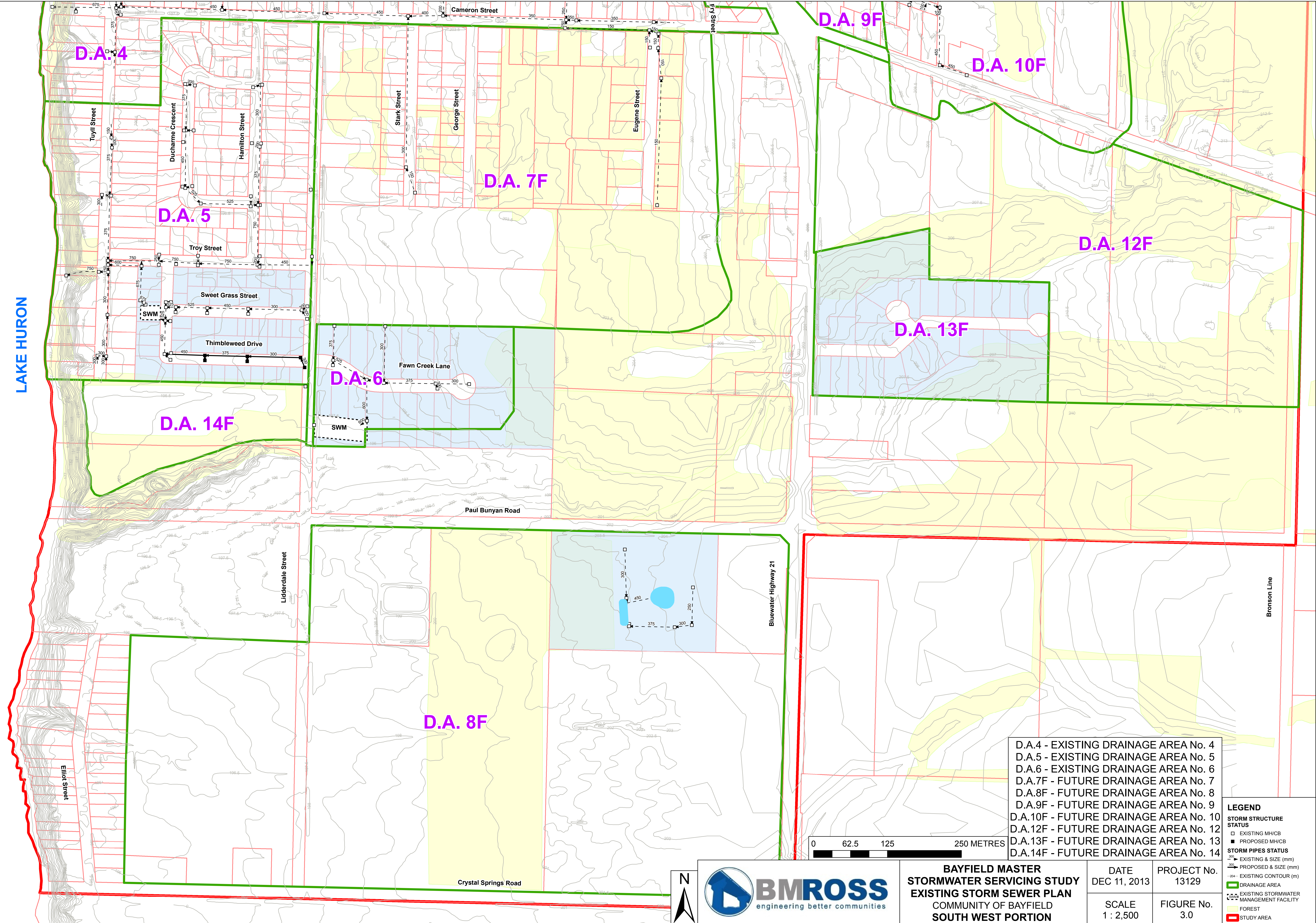
STORM DRAINAGE

- DRAINAGE AREA
- EXISTING STORMWATER MANAGEMENT FACILITY
- FOREST
- STUDY AREA



- D.A.1 - EXISTING DRAINAGE AREA No. 1
- D.A.3 - EXISTING DRAINAGE AREA No. 3
- D.A.4 - EXISTING DRAINAGE AREA No. 4
- D.A.5 - EXISTING DRAINAGE AREA No. 5
- D.A.7F - FUTURE DRAINAGE AREA No. 7
- D.A.9F - FUTURE DRAINAGE AREA No. 9
- D.A.10F - FUTURE DRAINAGE AREA No. 10
- D.A.11F - FUTURE DRAINAGE AREA No. 11
- D.A.12F - FUTURE DRAINAGE AREA No. 12





D.A. 9F

D.A. 10F

D.A. 7F

D.A. 12F

D.A. 5

D.A. 13F

D.A. 6

D.A. 14F

D.A. 8F

- D.A.4 - EXISTING DRAINAGE AREA No. 4
- D.A.5 - EXISTING DRAINAGE AREA No. 5
- D.A.6 - EXISTING DRAINAGE AREA No. 6
- D.A.7F - FUTURE DRAINAGE AREA No. 7
- D.A.8F - FUTURE DRAINAGE AREA No. 8
- D.A.9F - FUTURE DRAINAGE AREA No. 9
- D.A.10F - FUTURE DRAINAGE AREA No. 10
- D.A.12F - FUTURE DRAINAGE AREA No. 12
- D.A.13F - FUTURE DRAINAGE AREA No. 13
- D.A.14F - FUTURE DRAINAGE AREA No. 14

LEGEND

STORM STRUCTURE STATUS

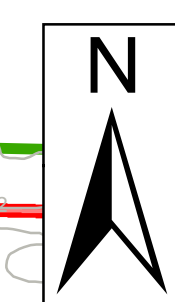
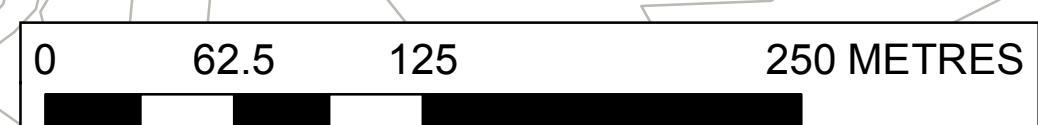
- EXISTING MH/CB
- PROPOSED MH/CB

STORM PIPES STATUS

- EXISTING & SIZE (mm)
- PROPOSED & SIZE (mm)
- EXISTING CONTOUR (m)
- PROPOSED CONTOUR (m)

DRAINAGE AREA

- EXISTING DRAINAGE AREA
- PROPOSED DRAINAGE AREA
- FOREST
- STUDY AREA



**BAYFIELD MASTER
STORMWATER SERVICING STUDY
EXISTING STORM SEWER PLAN
COMMUNITY OF BAYFIELD
SOUTH WEST PORTION**

| | |
|----------------------|----------------------|
| DATE DEC 11, 2013 | PROJECT No. 13129 |
| SCALE 1 : 2,500 | FIGURE No. 3.0 |



**BAYFIELD MASTER
STORMWATER SERVICING STUDY
FUTURE STORM SEWER PLAN
COMMUNITY OF BAYFIELD
NORTH WEST PORTION**

DATE
DEC 11, 2013

SCALE
1 : 2,500

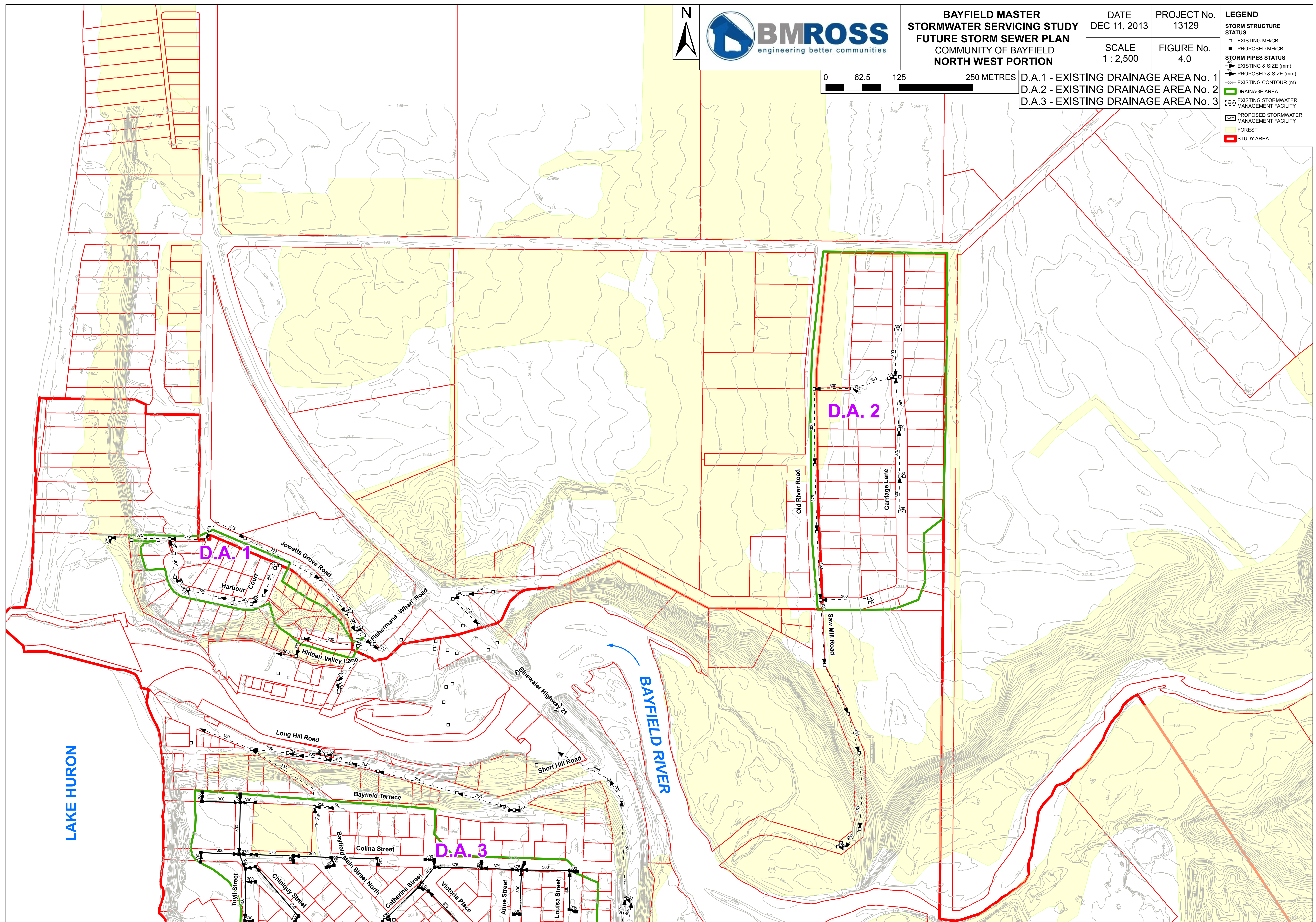
PROJECT No.
13129

FIGURE No.
4.0

| LEGEND | |
|-------------------------------|---|
| STORM STRUCTURE STATUS | |
| □ | EXISTING MH/CB |
| ■ | PROPOSED MH/CB |
| STORM PIPES STATUS | |
| → | EXISTING & SIZE (mm) |
| → | PROPOSED & SIZE (mm) |
| → | EXISTING CONTOUR (m) |
| → | PROPOSED CONTOUR (m) |
| □ | DRAINAGE AREA |
| □ | EXISTING STORMWATER MANAGEMENT FACILITY |
| □ | PROPOSED STORMWATER MANAGEMENT FACILITY |
| ■ | FOREST |
| ■ | STUDY AREA |



D.A. 1 - EXISTING DRAINAGE AREA No. 1
D.A. 2 - EXISTING DRAINAGE AREA No. 2
D.A. 3 - EXISTING DRAINAGE AREA No. 3





**BAYFIELD MASTER
STORMWATER SERVICING STUDY
FUTURE STORM SEWER PLAN
COMMUNITY OF BAYFIELD
CENTRE PORTION**

DATE
MAY 27, 2014

SCALE
1 : 2,500

PROJECT No.
13129

FIGURE No.
5.0

LEGEND

STORM STRUCTURE STATUS

- EXISTING MH/CB
- PROPOSED MH/CB

STORM PIPES STATUS

- EXISTING & SIZE (mm)
- PROPOSED & SIZE (mm)
- - - EXISTING CONTOUR (m)

DRAINAGE

- EXISTING DRAINAGE AREA
- PROPOSED DRAINAGE AREA

STORMWATER MANAGEMENT FACILITY

- EXISTING STORMWATER MANAGEMENT FACILITY
- PROPOSED STORMWATER MANAGEMENT FACILITY

FOREST

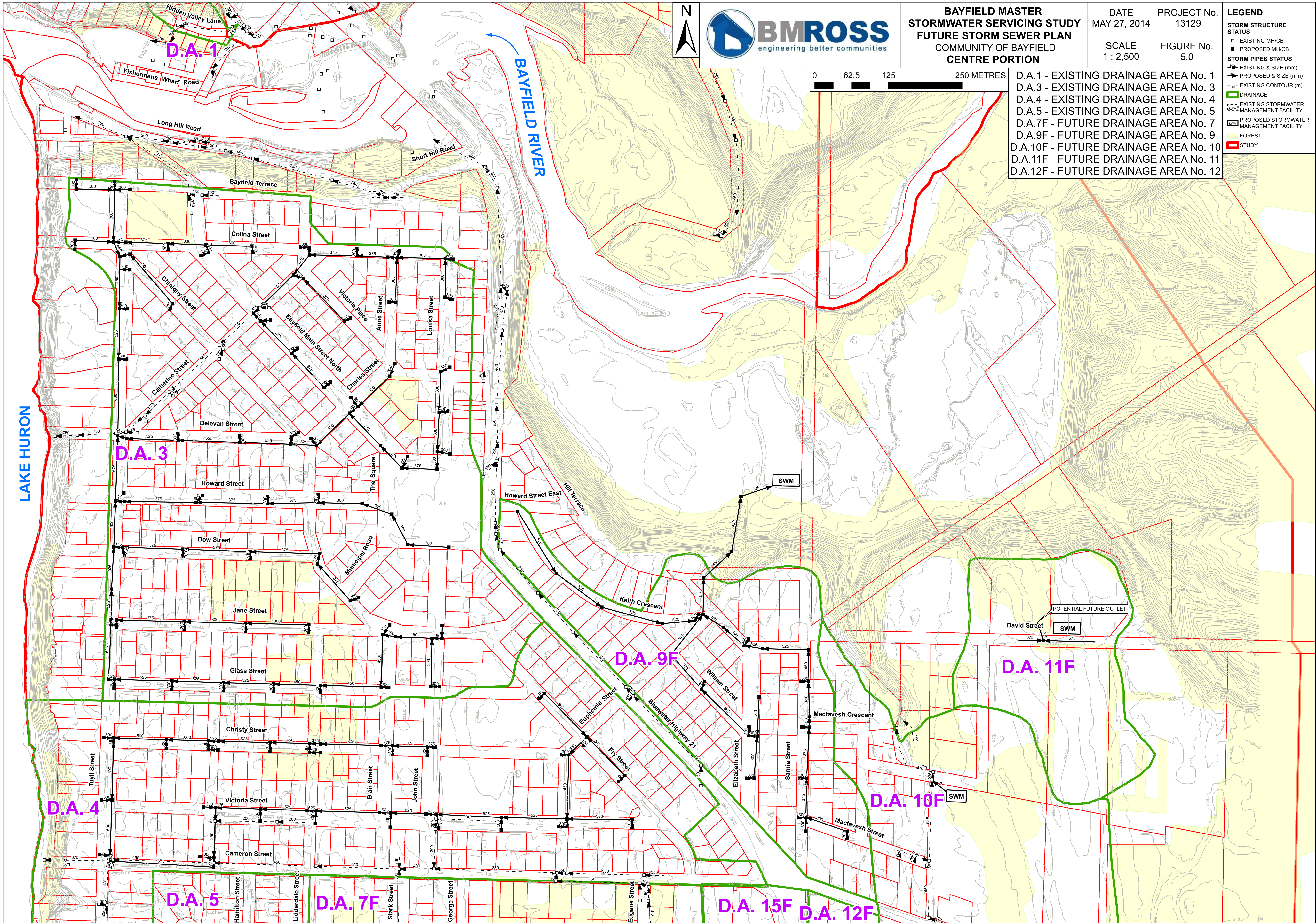
- FOREST

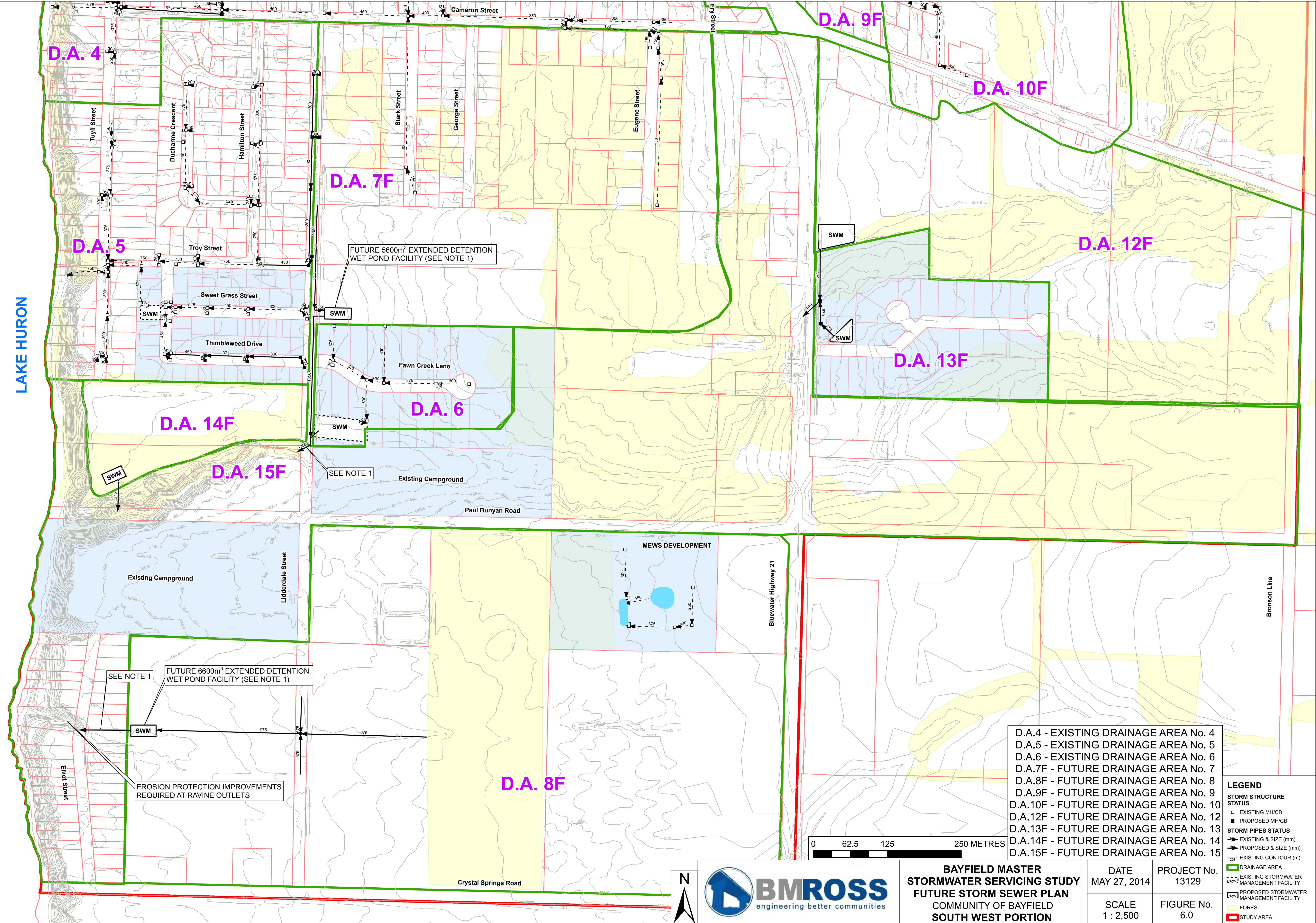
STUDY

- STUDY



- D.A.1 - EXISTING DRAINAGE AREA No. 1
- D.A.3 - EXISTING DRAINAGE AREA No. 3
- D.A.4 - EXISTING DRAINAGE AREA No. 4
- D.A.5 - EXISTING DRAINAGE AREA No. 5
- D.A.7F - FUTURE DRAINAGE AREA No. 7
- D.A.9F - FUTURE DRAINAGE AREA No. 9
- D.A.10F - FUTURE DRAINAGE AREA No. 10
- D.A.11F - FUTURE DRAINAGE AREA No. 11
- D.A.12F - FUTURE DRAINAGE AREA No. 12





D.A. 4

D.A. 9F

D.A. 10F

D.A. 7F

D.A. 5

D.A. 12F

FUTURE 5600m³ EXTENDED DETENTION WET POND FACILITY (SEE NOTE 1)

D.A. 14F

D.A. 6

D.A. 13F

D.A. 15F

SEE NOTE 1

Existing Campground

Paul Bunyan Road

MEWS DEVELOPMENT

FUTURE 6600m³ EXTENDED DETENTION WET POND FACILITY (SEE NOTE 1)

D.A. 8F

EROSION PROTECTION IMPROVEMENTS REQUIRED AT RAVINE OUTLETS

- D.A.4 - EXISTING DRAINAGE AREA No. 4
- D.A.5 - EXISTING DRAINAGE AREA No. 5
- D.A.6 - EXISTING DRAINAGE AREA No. 6
- D.A.7F - FUTURE DRAINAGE AREA No. 7
- D.A.8F - FUTURE DRAINAGE AREA No. 8
- D.A.9F - FUTURE DRAINAGE AREA No. 9
- D.A.10F - FUTURE DRAINAGE AREA No. 10
- D.A.12F - FUTURE DRAINAGE AREA No. 12
- D.A.13F - FUTURE DRAINAGE AREA No. 13
- D.A.14F - FUTURE DRAINAGE AREA No. 14
- D.A.15F - FUTURE DRAINAGE AREA No. 15

LEGEND

| | |
|-------------------------------|---|
| STORM STRUCTURE STATUS | |
| □ | EXISTING MH/CB |
| ■ | PROPOSED MH/CB |
| STORM PIPES STATUS | |
| → | EXISTING & SIZE (mm) |
| → | PROPOSED & SIZE (mm) |
| — | EXISTING CONTOUR (m) |
| — | 204 |
| □ | DRAINAGE AREA |
| --- | EXISTING STORMWATER MANAGEMENT FACILITY |
| --- | PROPOSED STORMWATER MANAGEMENT FACILITY |
| ■ | FOREST |
| □ | STUDY AREA |

0 62.5 125 250 METRES



BAYFIELD MASTER STORMWATER SERVICING STUDY FUTURE STORM SEWER PLAN
COMMUNITY OF BAYFIELD
SOUTH WEST PORTION

DATE
MAY 27, 2014
SCALE
1 : 2,500

PROJECT No.
13129
FIGURE No.
6.0