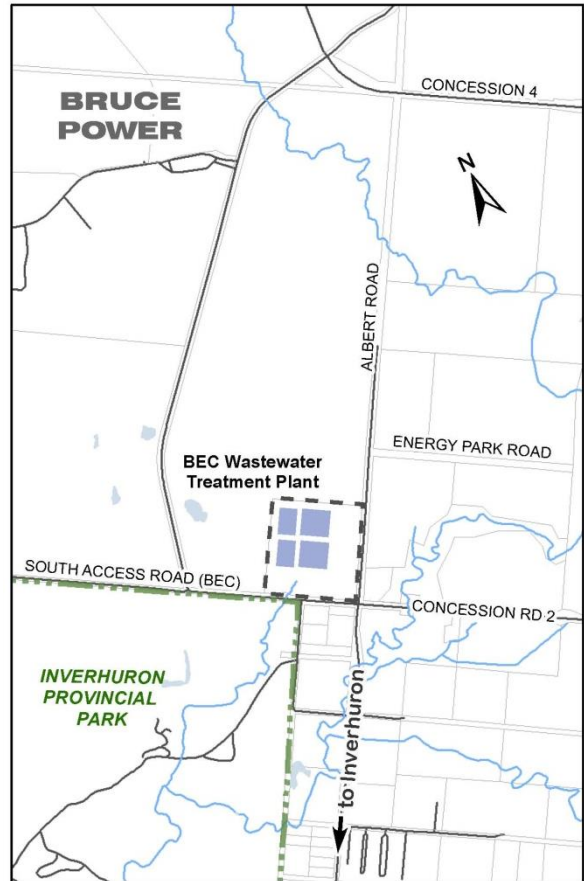


# MUNICIPALITY OF KINCARDINE CLASS ENVIRONMENTAL ASSESSMENT FOR THE EXPANSION OF THE BRUCE ENERGY CENTRE WASTEWATER TREATMENT PLANT

## NOTICE OF STUDY COMMENCEMENT

### THE PROJECT:

The Municipality of Kincardine has initiated a Class Environmental Assessment (Class EA) process to investigate the feasibility and requirements associated with the potential provision of wastewater services to Bruce Power. From background work completed as part of the Municipality of Kincardine Water and Wastewater Servicing Master Plan, there is some existing reserve capacity at the Bruce Energy Centre Wastewater Treatment Plant (BEC WWTP); however, an expansion to the existing plant capacity would be required to accommodate the expected wastewater flow from Bruce Power. The location of the plant is at the northwest corner of Concession 2 and Albert Road (shown in the included key plan). The investigation will consider alternatives related to both the expansion of BEC WWTP capacity and the conveyance of the wastewater to the plant. The study will also consider opportunities to service adjacent residential lands and commercial/industrial operations. This notice is being issued to advise of the start of study investigations.



### THE ENVIRONMENTAL ASSESSMENT PROCESS:

The planning for this project is following the environmental planning and design process set out for Schedule 'C' activities under the Municipal Class Environmental Assessment (Class EA) process, which is an approved process under the Environmental Assessment Act. The purpose of the Class EA planning and design process is to identify any potential environmental impact associated with the proposed works and to plan for appropriate mitigation of any identified impacts. This process includes consultation with the general public, government review agencies and affected property owners. Near the completion of the planning process, an Environmental Study Report (ESR) will be available for public review. Notices for public meetings and the availability of the ESR will be posted on the Municipality's website ([www.kincardine.net](http://www.kincardine.net)) and in the local papers.

### PUBLIC INVOLVEMENT:

Public consultation is a key component of this study. A public information meeting will be scheduled for the spring of 2018, and details regarding the public meeting will be provided in a future notice. If you have any questions or comments, or wish to be added to the study mailing list, please contact the consulting engineers: **B. M. Ross and Associates, 62 North Street, Goderich Ontario, N7A 2T4. Telephone (519) 524-2641. Fax (519) 524-4403. Attention: Lisa Courtney, Environmental Planner. E-mail: [lcourtney@bmross.net](mailto:lcourtney@bmross.net)** Any comments collected will be maintained on file for use during the project and may be included in project documentation. With the exception of personal information, all comments will become part of the public record.

**This Notice issued November 29, 2017**

**Adam Weishar, C.E.T, Director of Public Works, Municipality of Kincardine**