

WHAT IS A MUNICIPAL CLASS ENVIRONMENTAL ASSESSMENT (CLASS EA)?

A Municipal Class Environmental Assessment (also referred to as a Class EA) is an approved process municipalities follow to investigate projects related to transportation, water, wastewater and stormwater infrastructure.

- A Class EA process has 5 *phases* – generally, the more complex a project is, the more phases need to be completed as part of the process.
- Class EA projects are classified into *Schedules*, depending on the potential impacts and complexity of the project.
- Public and agency consultation is a significant aspect of the Class EA process.

WHAT ARE THE *SCHEDULES* OF PROJECTS COVERED UNDER THE CLASS EA?

Schedule A – Pre-approved projects, typically involve normal or emergency operational and maintenance activities; are limited in scale, with minimal adverse environmental effects.

Schedule A⁺ – Similar type of projects as Schedule A, however, the public must be notified (i.e. through local newspaper, flyer, letter) before any construction or work begins.

Schedule B – Projects that typically include minor improvements or expansions to existing facilities, with some potential for environmental effects with known mitigation. The screening process covers Phases 1 and 2 and includes consultation with affected public and relevant review agencies and identification of alternative solutions and their evaluation. A Project File is prepared at the end of Phase 2 and is made available for public review.

Schedule C – A projects that typically include construction of new facilities or major expansions to existing facilities, with the potential for significant environmental impacts to occur. These projects must complete Phases 1 to 4 and produce an Environmental Study Report is written to document the findings at the end of Phase 4.

WHAT ARE THE *PHASES* OF A MUNICIPAL CLASS EA?

Phase 1 – Problem or Opportunity Statement

- A statement is prepared that defines the objectives of the project.

Phase 2 – Alternative Solutions

- Alternative solutions to the problem or opportunity are identified. This phase includes consultation with the public, government agencies, and First Nations and Métis Communities.

Phase 3 – Alternative Design Concepts for Preferred Solution

- Alternative methods of implementing the preferred solution are examined. This phase also includes consultation efforts.

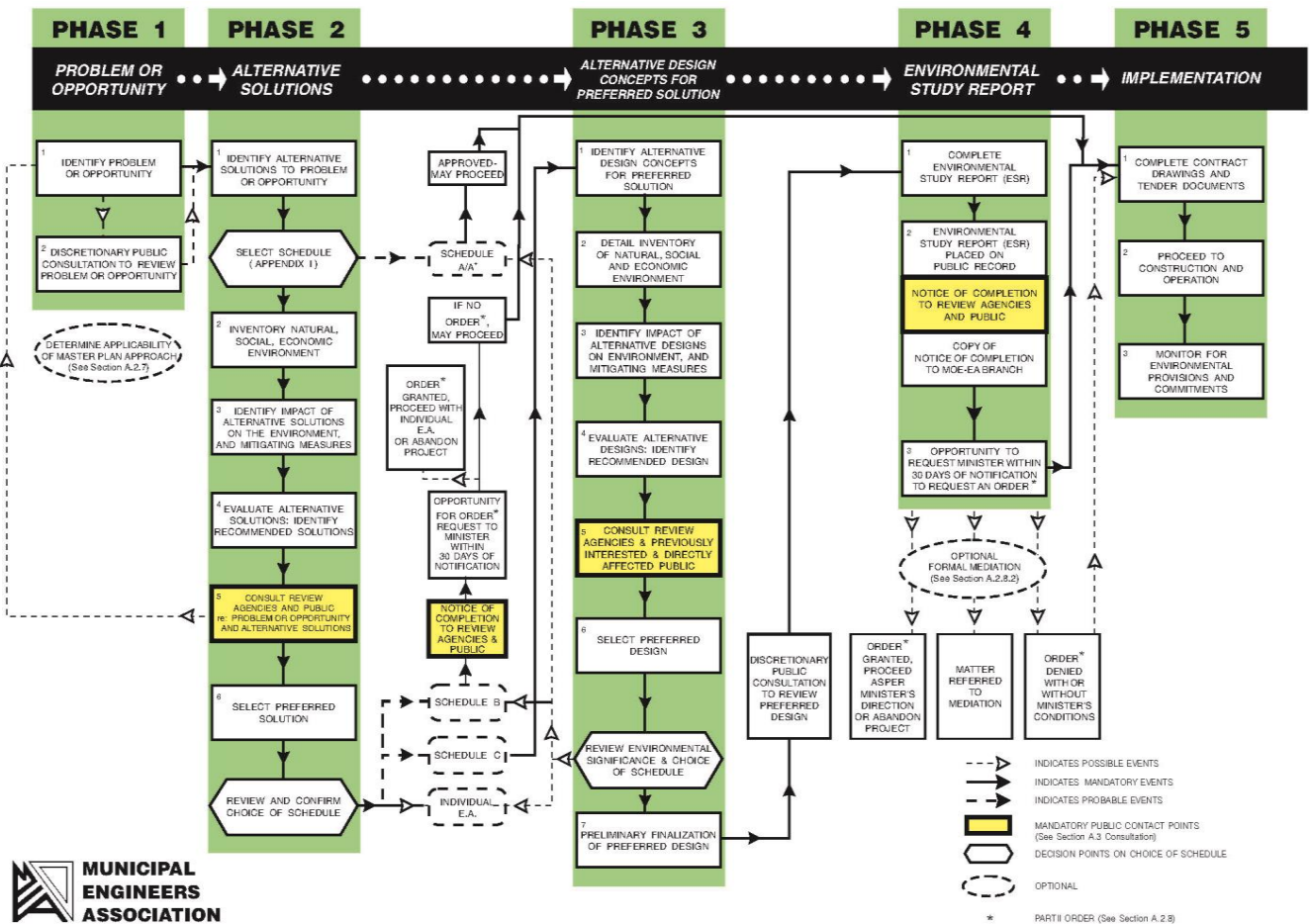
Phase 4 – Environmental Study Report (ESR)

- Completion of an ESR that documents the process undertaken for the project. Public, government agencies and others have an opportunity to review the report.

Phase 5 – Implementation

- Is the final design phase for the project planned through Phases 1-4; and includes tendering of the project, construction and monitoring of any mitigation measures.

Phases of the Municipal Class EA Process



OPPORTUNITIES FOR PUBLIC CONSULTATION

Public consultation is an important aspect of the Municipal Class EA process.

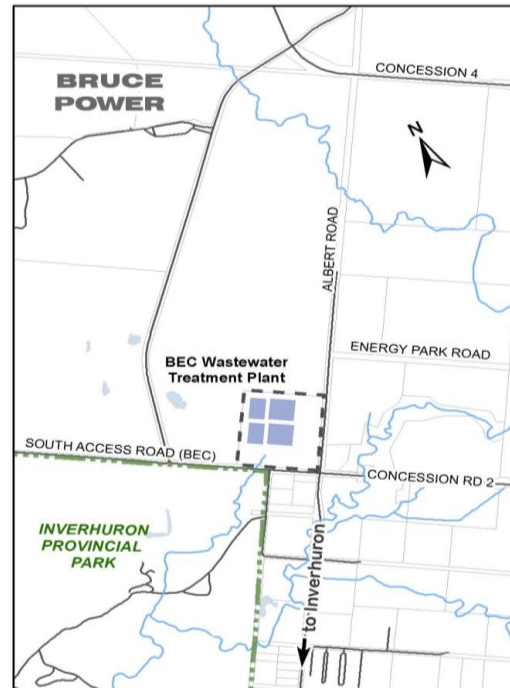
Opportunities for the public to provide comments:

- Mandatory public consultation points of contact (i.e. in a local newspaper, flyer, and/or letter) include:
 - Notices of Study Commencement and Completion.
 - Notices of Public Information Centers and Public Meetings.
- During the review period of the Class EA documents (Project File or ESR)
- Through direct contact with the project team (Municipality and Consultant)

Once a Notice of Study Completion is advertised for a project, a 30-day public and government agency review period begins. If any outstanding issues cannot be resolved through discussion including mediation with the project team, a "Part II Order" request may be sent to the Minister of the Environment and Climate Change asking that the process be reviewed to determine whether or not the project properly addressed a significant issue or should address it though a higher level of environmental assessment. A "Part II Order" request is not a means to delay or stop a project from being implemented.

MUNICIPAL CLASS ENVIRONMENTAL ASSESSMENT FOR THE EXPANSION OF THE BRUCE ENERGY CENTRE WASTEWATER TREATMENT PLANT

Project Scope From background work completed as part of the Municipality of Kincardine Water and Wastewater Servicing Master Plan, it was identified that there is some existing reserve capacity at the Bruce Energy Centre Wastewater Treatment Plant (BEC WWTP). However, an expansion to the existing plant capacity would be required to accommodate the expected wastewater from Bruce Power. The location of the plant is at the northwest corner of Concession 2 and Albert Road (shown in the included key plan). The investigation will consider alternatives related to expansion of the BEC WWTP capacity and the conveyance of the wastewater to the plant. The study will also consider opportunities to service adjacent residential lands and commercial/industrial operations.



Initiated November 29, 2017 (Notice of Commencement) published in the Kincardine News and the Kincardine Independent

Schedule Schedule C, Municipal Class Environmental Assessment

Phases Phase 1 - 4 of the Class EA process will be completed upon study completion

Opportunities for Public Input Public Information Centre (PIC): Initial PIC in Spring of 2018 (exact date and location TBD) or by contacting the project contacts below*:

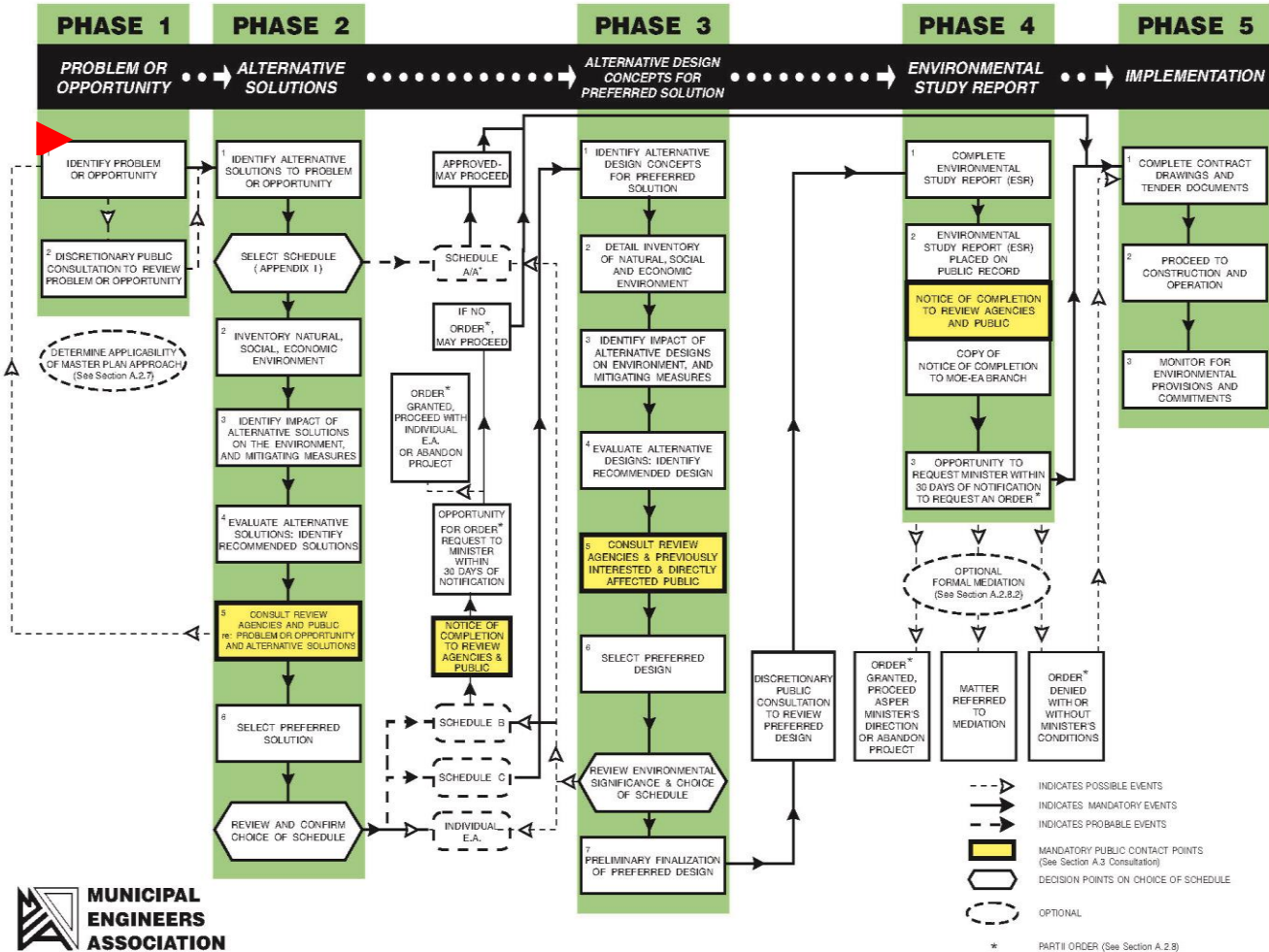
Project Contacts **Adam Weishar, C.E.T.**
Director of Public Works
Municipality of Kincardine
1475 Concession 5, R.R. #5
Kincardine, ON N2Z 2X6
P: (519) 396-3468
F: (519) 396-8288
E: aweishar@kincardine.net

Lisa Courtney, M.Sc., MCIP, RPP
Environmental Planner
B.M. Ross and Associates Limited
62 North Street
Goderich, ON N7A 2T4
P: (519) 524-2641
F: (519) 524-4403
E: lcourtney@bmross.net

*Any comments collected will be maintained on file for use during the project and may be included in project documentation. With the exception of personal information, all comments will become part of the public record.

MUNICIPAL CLASS ENVIRONMENTAL ASSESSMENT FOR THE EXPANSION OF THE BRUCE ENERGY CENTRE WASTEWATER TREATMENT PLANT

Where are we in the EA process? The project is currently in *Phase 1: Identify Problem or Opportunity* (January 2018)



- Current Phase

Next Steps in the Process

- Begin background studies and technical analyses
- Initial Public Information Centre (Spring 2018)
- Review input from public and agencies
- Detailed studies and evaluations of alternatives
- Select preferred alternative
- Second Public Information Centre – review and receive input on preferred alternative
- Finalize Environmental Study Report (ESR)
- Public Notice of Completion
 - 30 day review period of ESR
- Proceed to final design

