



# CLASS EA FOR THE TEESWATER RIVER BRIDGE

## MUNICIPAL CLASS ENVIRONMENTAL ASSESSMENT

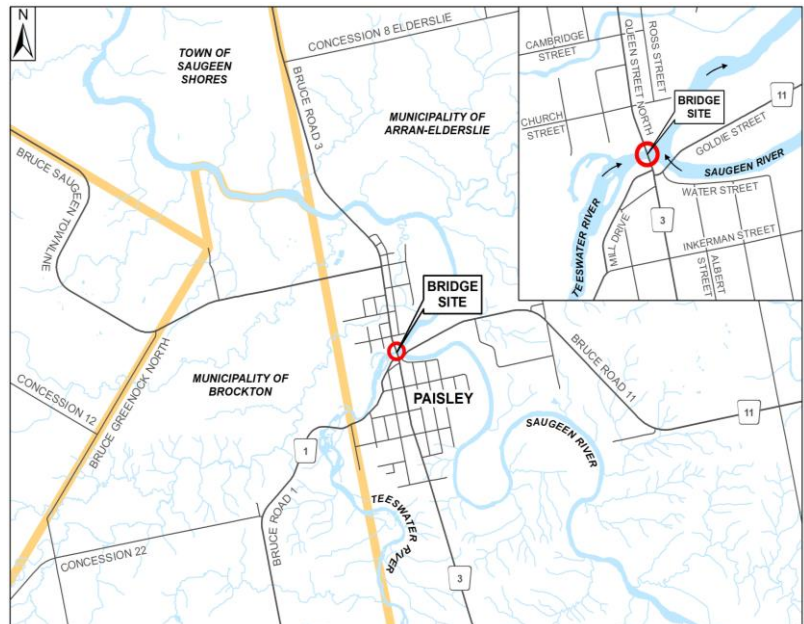
### COUNTY OF BRUCE

## NOTICE OF STUDY COMMENCEMENT

The County of Bruce has initiated a Class Environmental Assessment (Class EA) process to consider options associated with replacement of the Teeswater River Bridge which spans the Teeswater River along Bruce Road 3 in Paisley, immediately north of the intersection with Bruce Road 11 (as shown on the accompanying key plan). Recent inspections of the structure have identified significant deterioration with many bridge components. The County is considering alternatives associated with the new bridge design as well as detour alternatives to allow traffic to detour around the site during construction of the new crossing.

### THE ENVIRONMENTAL ASSESSMENT PROCESS:

The planning for this project is following the planning process established for Schedule 'C' activities under the Municipal Class Environmental Assessment (Class EA) document. Schedule 'C' projects must complete all five phases of the Class EA, which is undertaken in order to identify potential environmental impacts associated with the proposal and to plan for appropriate mitigation of any impacts. The process includes consultation with the public, First Nation and Métis communities, project stakeholders and review agencies. This notice is being issued to advise of the start of study investigations. There will be additional opportunities for public input and involvement as the study progresses.



### PUBLIC INVOLVEMENT:

Public input and comments are invited for incorporation into the planning and design of this project and will be received until November 29, 2019. Any comments collected in conjunction with the study, will be maintained on file for use during the project and may be included in project documentation. With the exception of personal information, all comments will become part of the public record. For further information regarding this project, please contact the project engineers: B.M. Ross and Associates: 62 North Street, Goderich, Ontario, N7A 2T4. Telephone (Toll Free): (888) 524-2641. Fax: (519) 524-4403. Kelly Vader, Environmental Planner (e-mail: [kvader@bmross.net](mailto:kvader@bmross.net)), within 30 days from the date of this Notice

This Notice Issued October 29, 2019

County of Bruce  
Jim Donohoe, Engineering Manager